

WWS-LITE Inventory and Stock Management Software for Windows

User Documentation

Rev. 1.12.27

Content

Content.....	2
Software Start: User Login and Serial No.....	5
Software Start: Select and Open File.....	6
Table View.....	7
Adding a new item.....	8
Deleting an item.....	9
Detail View.....	10
Settings: Define Table Columns.....	11
ASSET.....	12
Asset Movement: Dispatch / Approach.....	12
Inventory.....	12
History File.....	13
Global History.....	13
Detail History.....	14
Item Groups.....	15
Item Locations / Storage.....	17
Changing Location: Relocation.....	19
Changing location without any relocation.....	20
More Information.....	21

Dokument: © AE hjw Rev 10201413.320153

First of all: the aim was to create a stock management software which is extremely easy to use! In fact we made a software package for the people inside the stock, not at the management. In a logical way, most customer does not need any documentation for using the software package – they download and install it, use the DEMO database for getting first experiences with the package and start their own stock management. This will work and this is what we want. For these who prefer some wridden words: here are some short explanations for the most used actions...

If you miss a special thing, please do not hesitate to ask, so we can expand our documentation in the way you need. Thank you!

Software Start: User Login and Serial No

The screenshot shows a software login window titled "WWS Lite Login EN US 1.13.2". The interface is divided into two main sections. The top section, labeled "Login Data", contains three input fields: "User" with the value "demo", "Password" (which is currently empty), and "Computer" with the value "TOSHIBA2014". To the right of the password field is a checkbox labeled "Show Password". Below these fields is a large, prominent button labeled "OK / START" with a green play icon. The bottom section, labeled "Product ID", contains an empty text input field and a "Save ID" button below it.

Specify user name or user short name. All upcoming actions will be automatically stored with this user name inside history etc. If you bought the registered version of this software, input serial no at the bottom of this form. Note: input serial no will be saved automatically together with the computername at your local system. If you change the software to another system you have to input the serial no again!

Software Start: Select and Open File



Like most software products: before you can work with your data, you have to open a data file. There are several ways to select and open your desired stock file.

Select Existing File

Select an existing file from your drive and open it.

Create New File

Make a new stock file. Note: if you use this, please input 2...3 items, close the program and start it again. The software needs a restart with a known file before all systems will run properly.

Open Predefined File

This is a way to open a select file and to disable all the choosing ways for the user. Please ask local support for details!

Recent Files

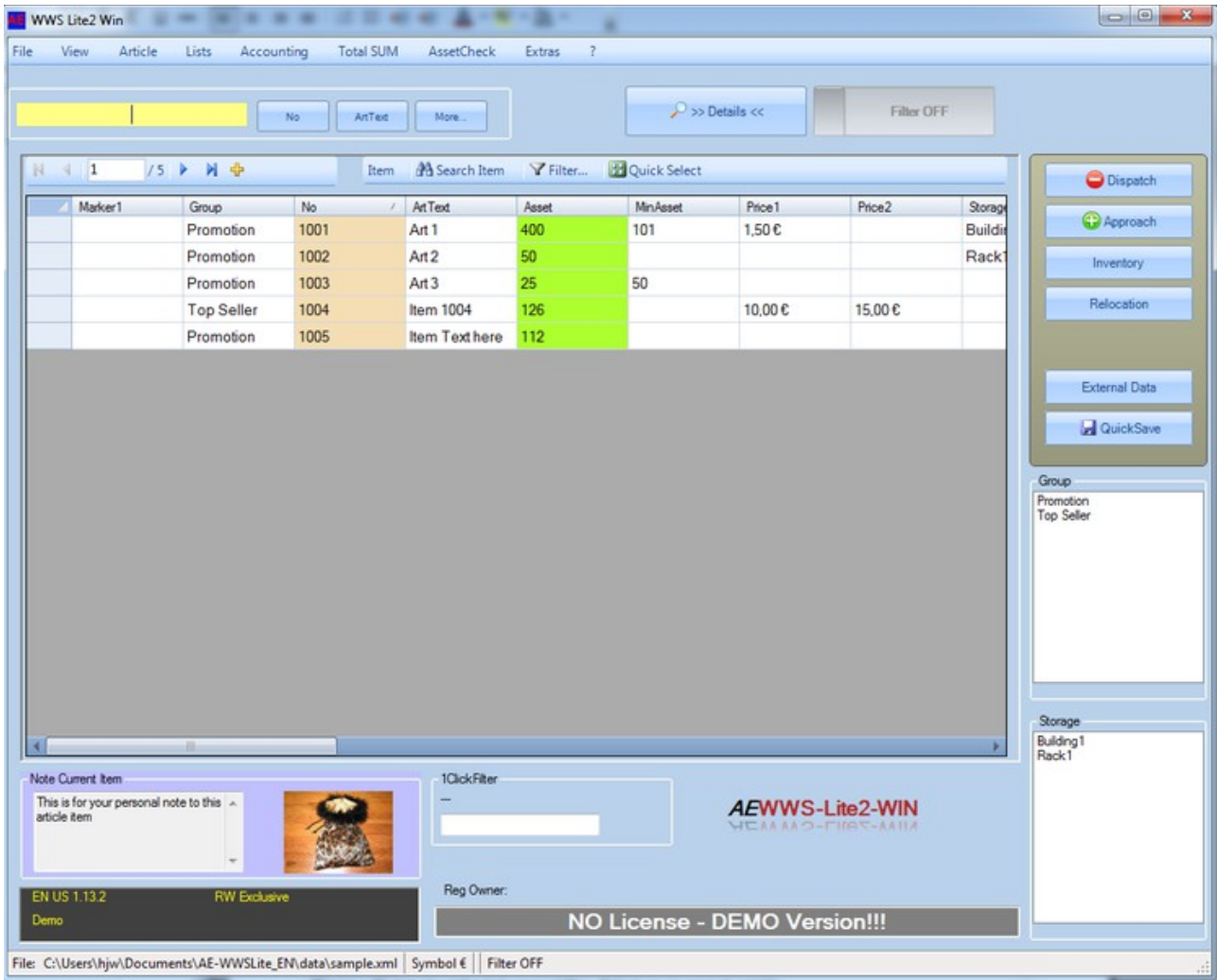
Shows a file list about the last opened files. Select an and open it quickly.

Demo

In non registered versions only! This opens a demo file automatically to give you the opportunities for playing around a bit with the software.

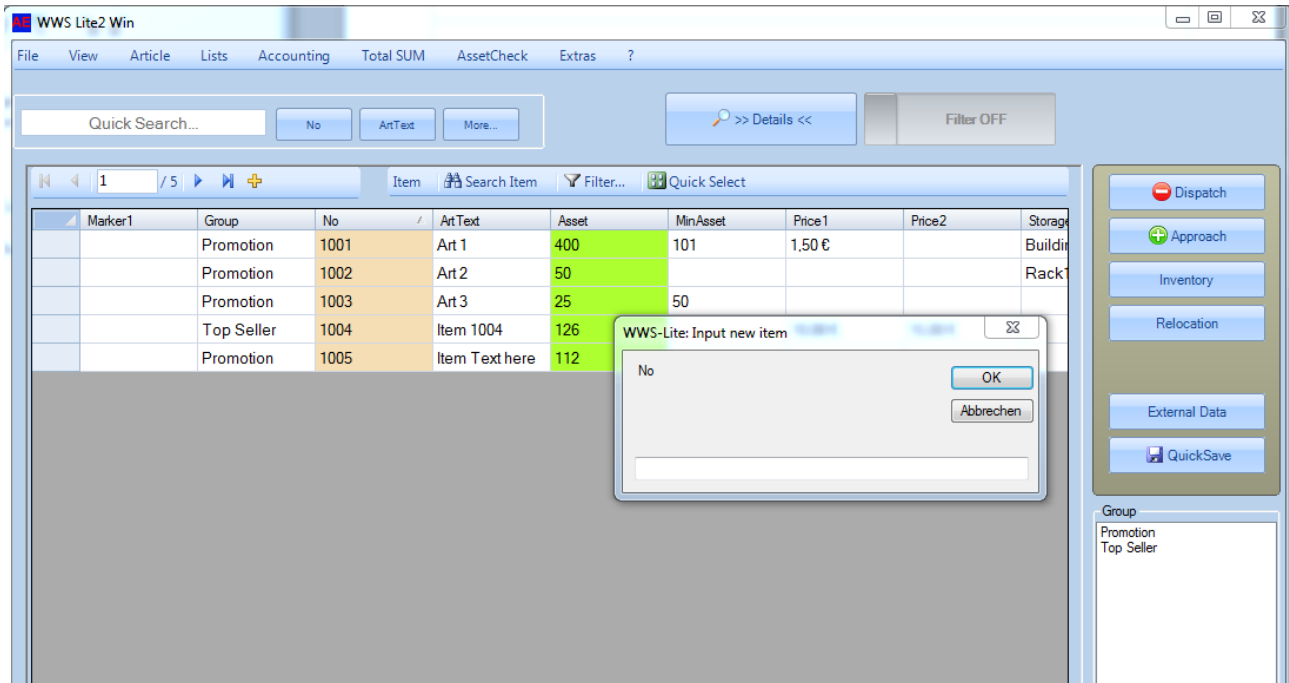
After opening the software starts with the main TABLE VIEW window.

Table View



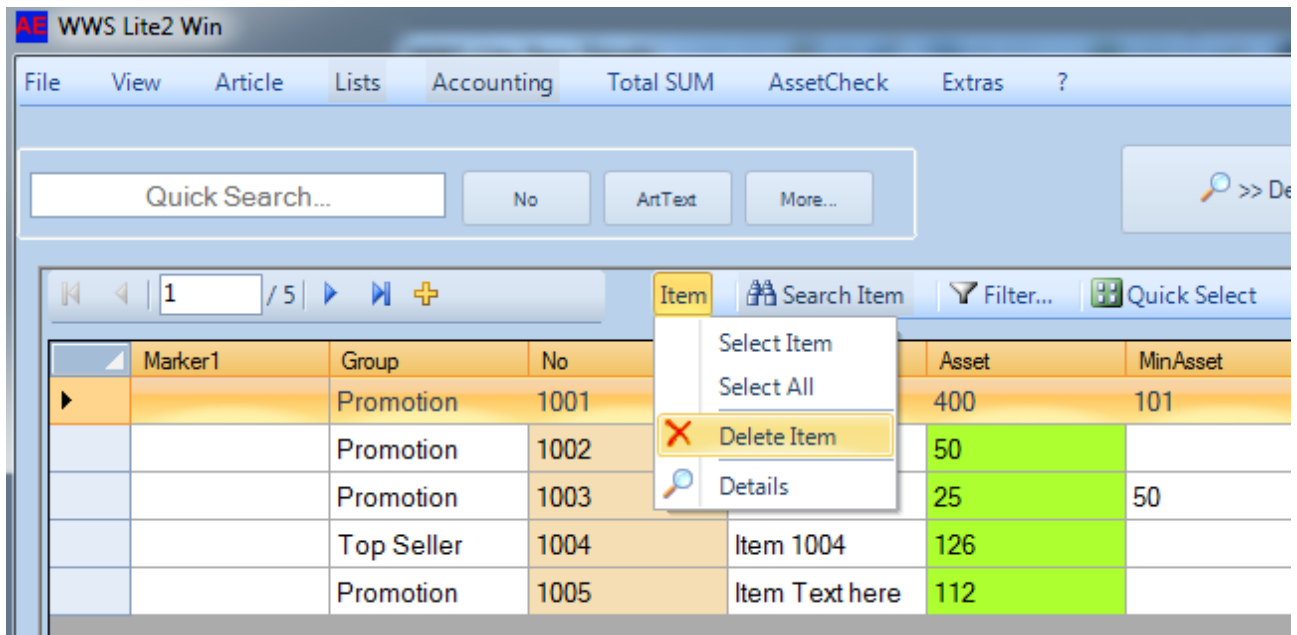
Sample used DEMO file for opening. Inside table view, you see a list with your items. Use the navigation buttons for a quick navigation, use filters, search or quick select for setting a filtered view.

Adding a new item

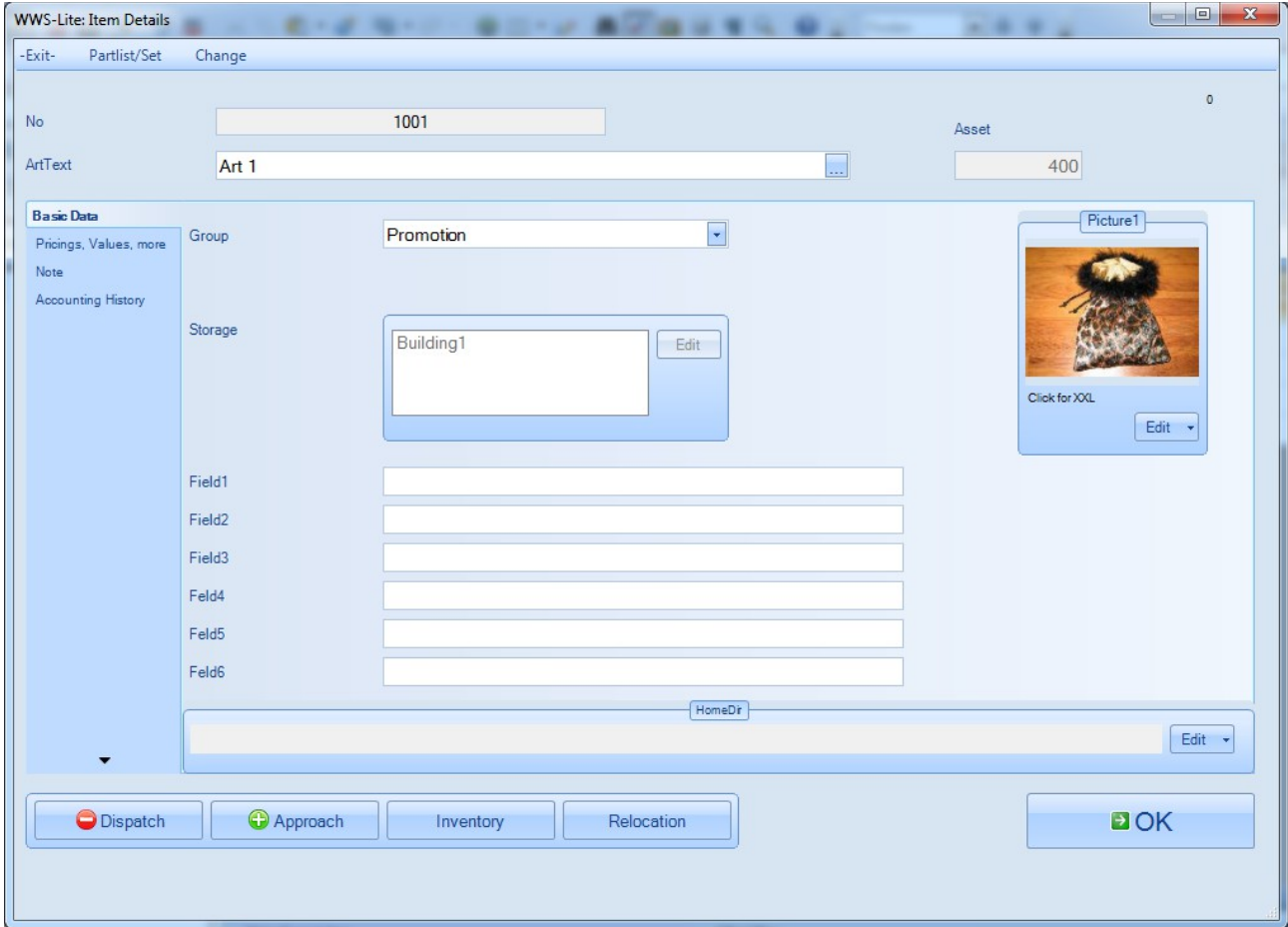


Pressing the yellow + button in the navigation bar (directly above the table), will open a new item windows. Enter the article / item no for the new record. After entering the item no, the software will jump to detail window automatically so you can enter the detail data of your new item.

Deleting an item

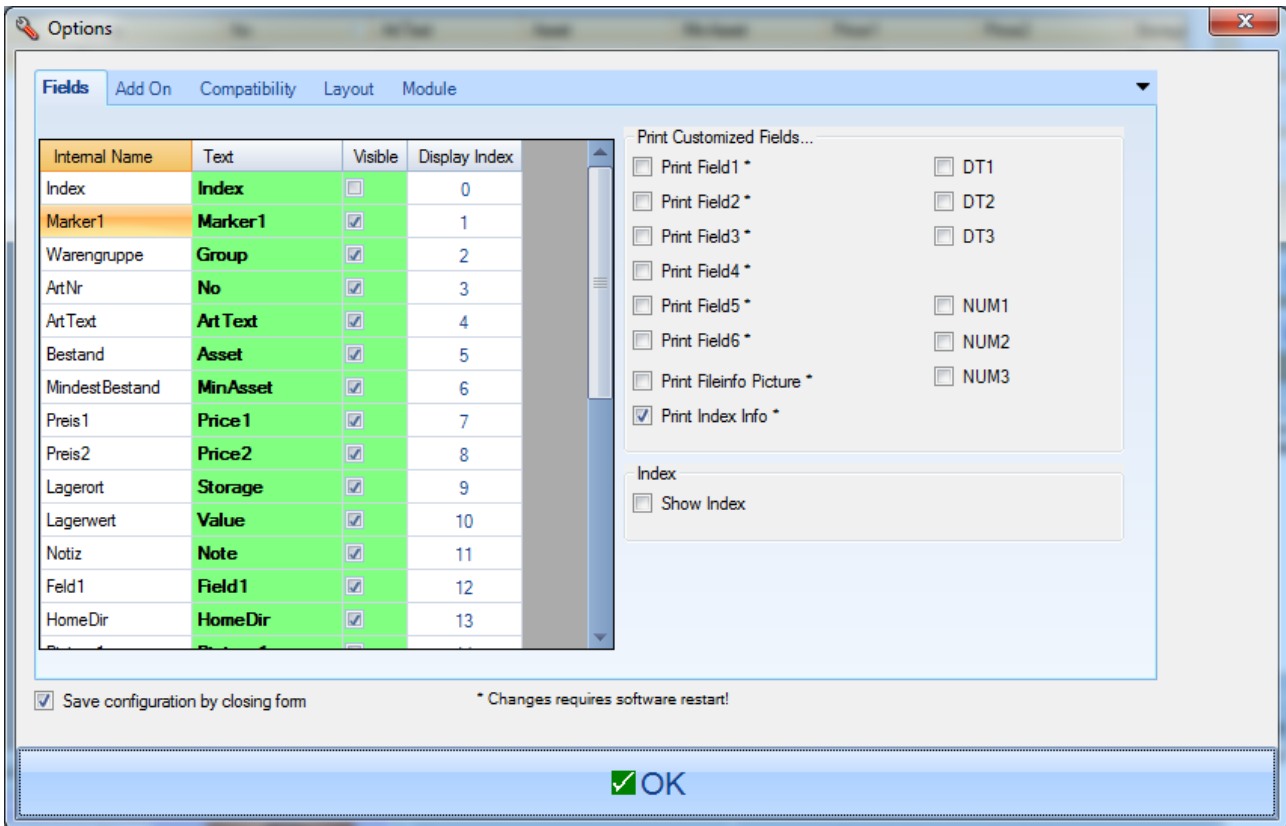


Detail View



Detail View shows all information about an item. View them, change them, edit them in this mask! It opens automatically after you enter a NEW ITEM no or of you press the DETAIL button inside table view. Details are divided into several tabs, so you can get a complete overview about your items.

Settings: Define Table Columns



EXTRAS OPTIONS, Tab FIELDS. Specify the columns you want to use inside your data table. Internal name is the internal name, you can not change this! Text is the shown text, use a text for your data field you like. If you do not need a columns you can block it with visible totally. The display index is for your information: you can change the displayed sequence during the table view: mark a column and move it to the position you like. As in Excel or another other office software. This will change the display index of this column automatically. Note: changes will be saved if you leave this form with OK only.

ASSET

Asset (german: Bestand) is the main function of an inventory software. Every item has an asset, given during first creating this item. The only ways to change the asset is: moving of goods as approach, dispatch or data capturing for inventory! Every moving will be recorded inside a detailed history, so you can see how it was moved later.



Use the buttons from table or detail view for data capturing of this movements.

Asset Movement: Dispatch / Approach

Booking an Approach: goods receives the stock, current asset will increase. Booking an Dispatch: goods will leave the stock, current asset will decrease. All kinds of movement are written inside a history file.

Inventory

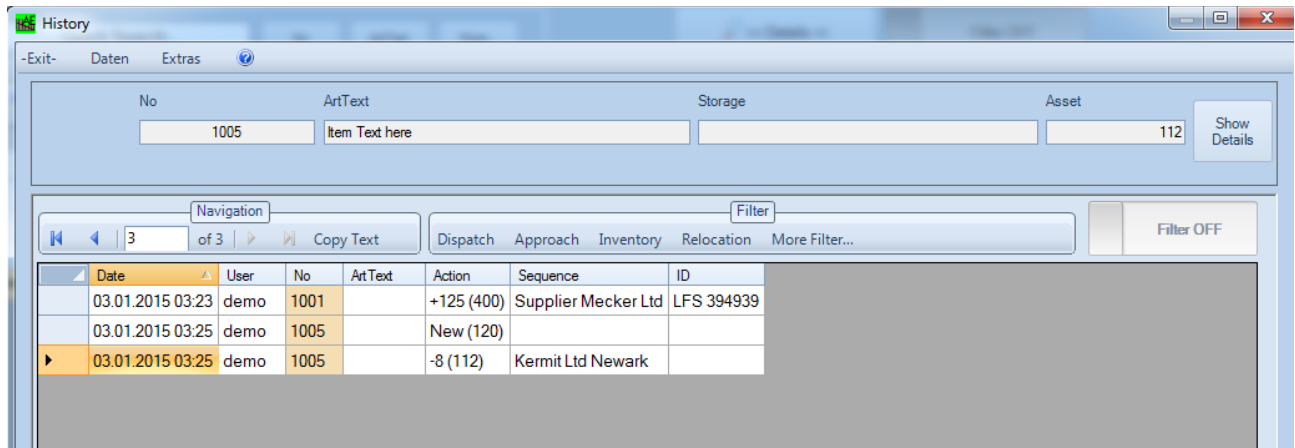
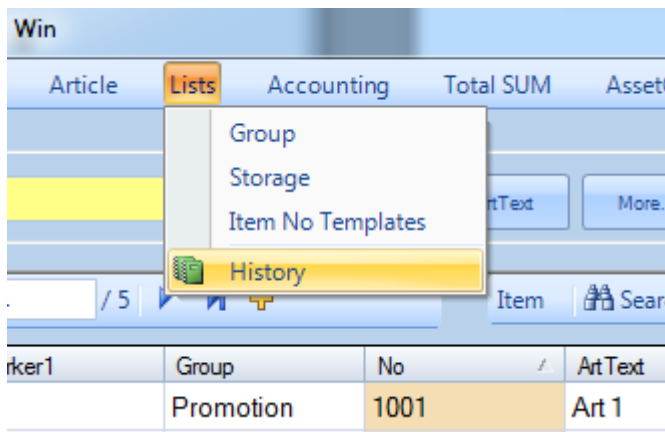
Count current asset and input value for each record. History file will show any differences.

History File

Like a friendly kind of big brother: the software write a history file with most action the user do. Noticed action are e.g. creating NEW items, DELETING items, approach, dispatch, inventory and some more. The history file contains information about date / time, the user and what exactly happened in one line. The history file is a growing file, the information will be noticed until the user delete the history or until the user make a backup file with the internal delte and backup function from history file menu.

The software offers two history views:

Global History



Global History brings information about all movements and assets during until the history file exists. You have several filter possibilities for your global history. Most of them are self explained.

Detail History

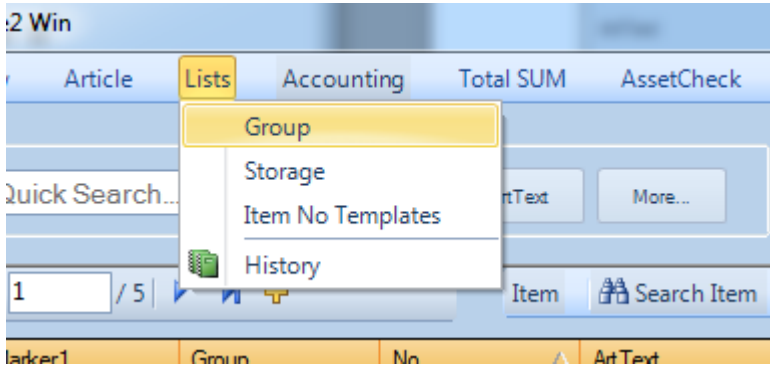
The screenshot shows the 'WWS-Lite: Item Details' window. At the top, there are menu options: '-Exit-', 'Partlist/Set', and 'Change'. Below this, there are input fields for 'No' (containing '1001') and 'ArtText' (containing 'Art 1'). To the right of the 'No' field is an 'Asset' label. On the left side, there is a vertical menu with options: 'Basic Data', 'Pncings, Values, more', 'Note', and 'Accounting History' (which is highlighted). The main area of the window contains a table with the following data:

	Date	User	Action	Sequence	ID	ArtText
▶	03.01.2015 03:23	demo	+125 (400)	Supplier Mecker Ltd	LFS 394939	

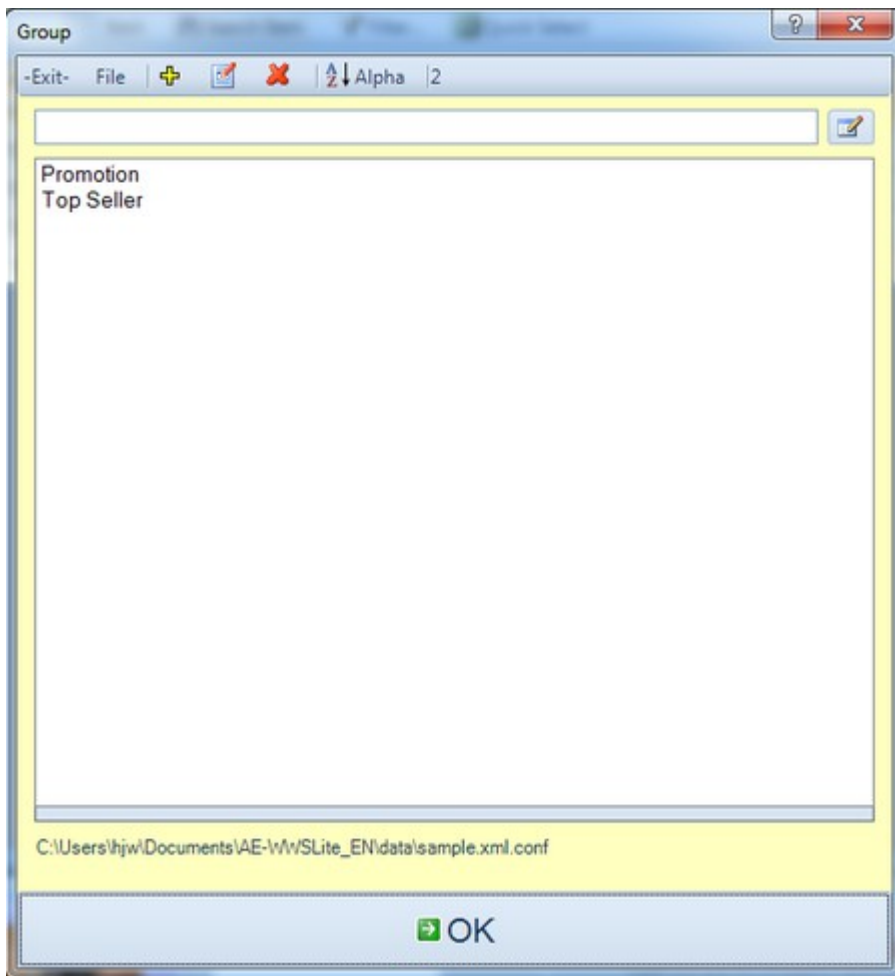
Below the table, there are navigation buttons: 'go to TOP', 'go to END', and 'Copy Text'.

In fact tis is a filtered history for one item only. You can access it directly from the DETAIL view of an item. It shows history movments about the current item.

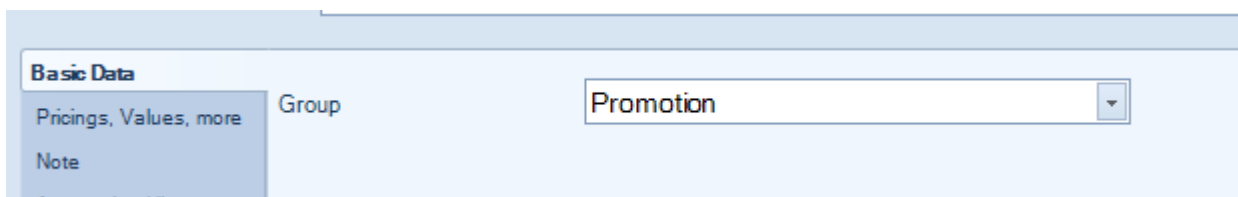
Item Groups



Activate Item Group input from list.

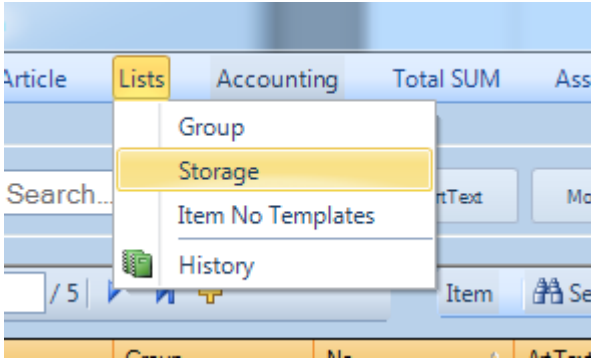


Input / edit / define item groups in separate windows. They will be stored in a separate list.

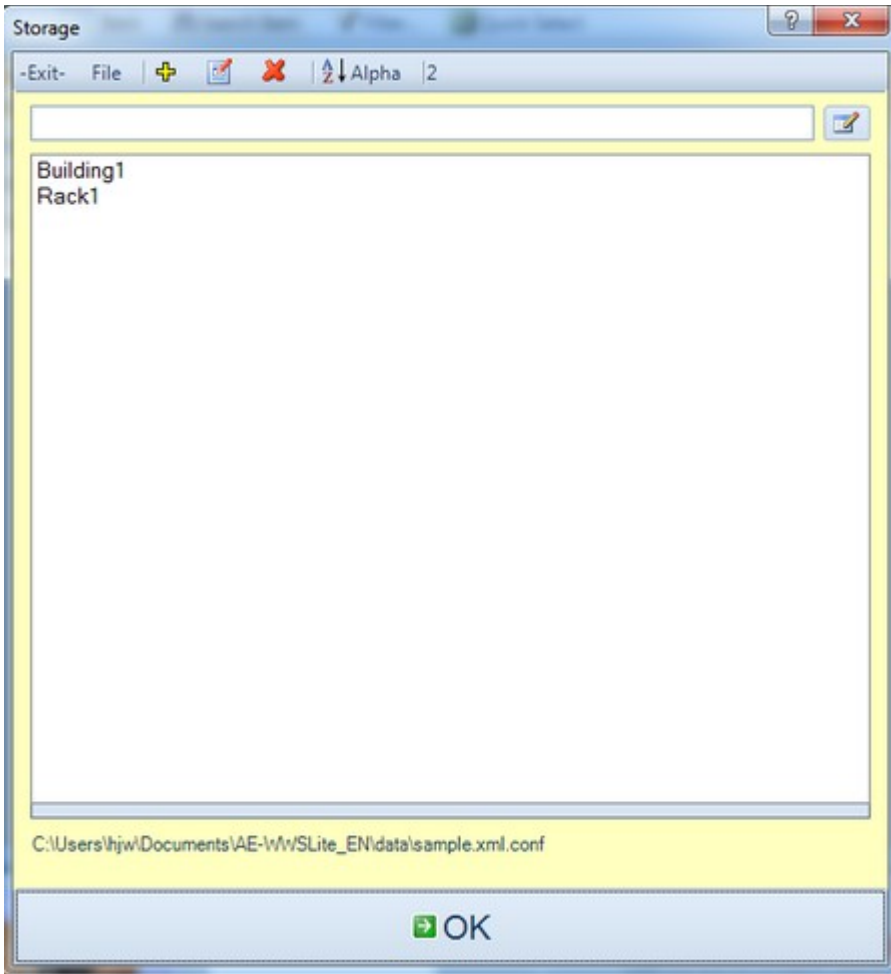


Use group inside the detail view of any item or use filter inside TABLE view.

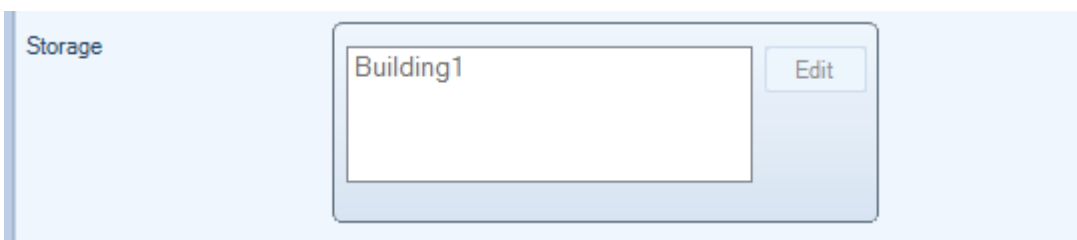
Item Locations / Storage



Activate from list.

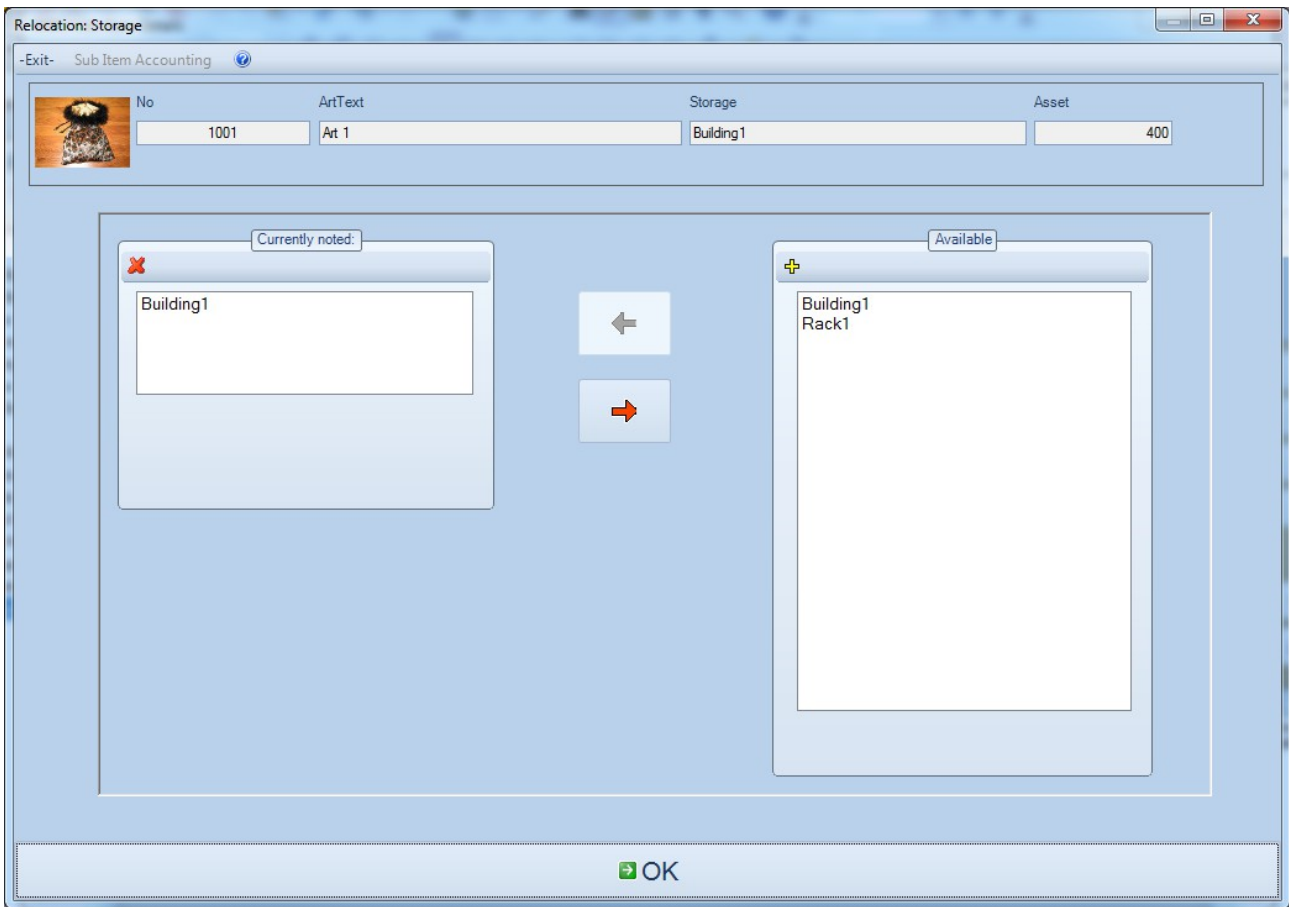


Special list editor for location / storage.



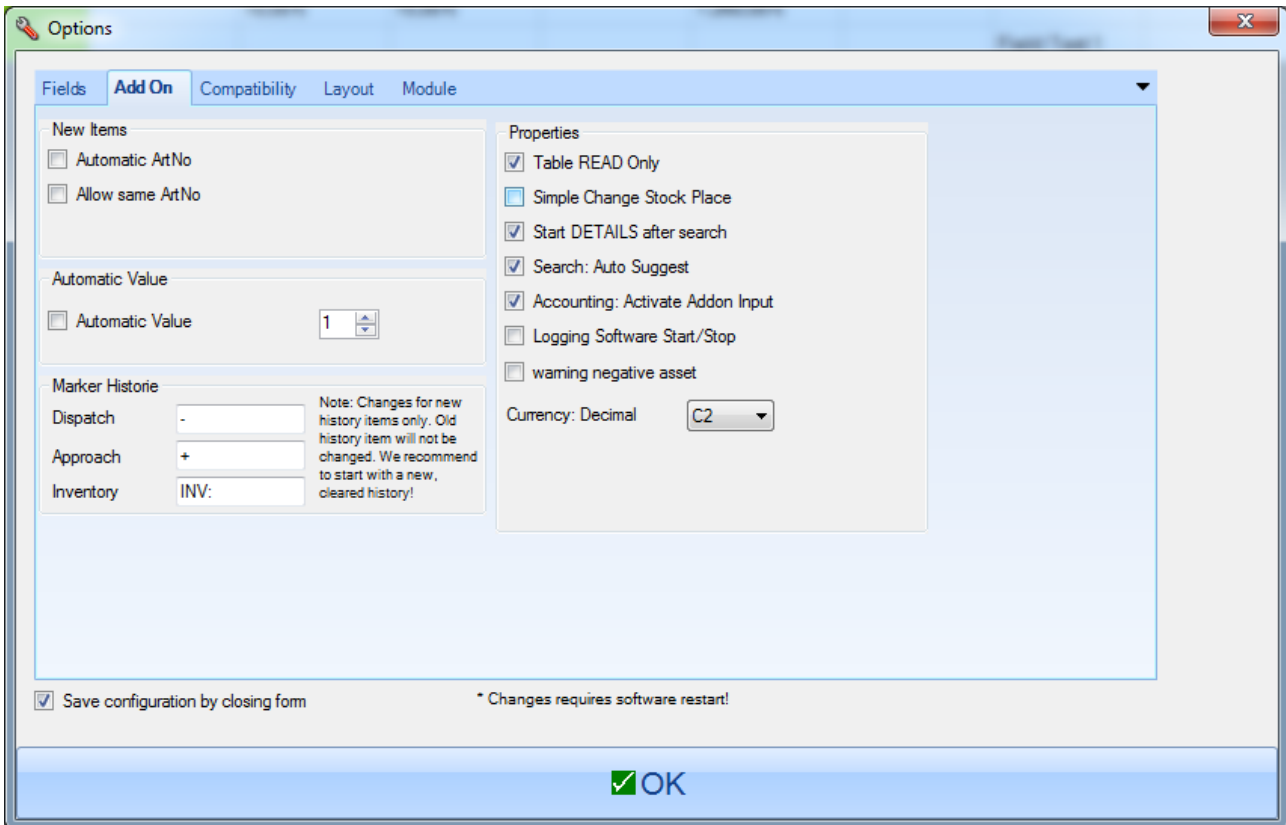
Access storage place inside DETAIL view of any item (or use filter inside TABLE view).

Changing Location: Relocation



Relocation is a way how to change the location of an item and it will be noticed inside the history file. So you can follow how the item came into its current place.

Changing location without any relocation



For users who do not want to relocate software and do not need these information inside their history file: activate SIMPLE CHANGE OF STOCK PLACE inside Extras, Options!

More Information

Screenshots show samples. Information without warranty. If you have questions, if you want to buy a product ID - please contact our sales team:

AE SYSTEME www.terminal-systems.de
Am Güterbahnhof 15
D-31303 Burgdorf / Hannover
Germany
Mail: info@terminal-systems.de