

## Content

Windows CE Lager / Stock / Inventory - English Version.....	1
Barcode Scanner.....	2
FTP File Transfer.....	2
Software Description.....	3
User Menu.....	3
Input Mask Approach, Dispatch, Inventory, Order.....	4
Input Mask Relocation.....	5
Data Monitor.....	6
Article Check.....	7
Product ID.....	8
Files.....	9
Software WinCeLagerEN-xxxx.EXE.....	9
Article Host File /TEMP/ARTIKEL.TXT.....	9
Input Data /TEMP/DATA.XLS.....	10
Installation at a Handheld Device.....	12
Installation at a standard PC under WIN XP / WIN32.....	12
More Information.....	13

## Windows CE Lager / Stock / Inventory - English Version

---

### **Latest version: 1.3.5**

WIN CE Stock / Inventory represents a brand new data capturing software for a mobile windows CE device. It allows data entry for most used jobs in stocks, e.g. dispatch, approach, inventory or order of goods.

The english version is a translated copy of the german WIN CE Lager / Inventur software. With this version we present a multi language version - available in german or in english language. (Other languages on request. All programm texts are separate - we can translate the software in nearly all languages.)

Hardware: Device with Windows CE 5.0 operating system, QVGA display 240 x 320 dots, touch screen and (optional) integrated laser scanner for barcode reading.

The software supports the upload of an article host file with main article information. After reading an article number the software will use the host file for showing more information to the user, e.g. article text and current stock asset. (Otherwise: with no uploaded article host file the software allows the input of every artikel number.)

Input data will be stored in XLS / CSV data format for easy downloading to your local PC. You can process the input data with officesoftware or directly import it into your ERP / MES software system.

Some useful hints:

## **Barcode Scanner**

---

Configure your internal scanner for sending TAB as post delimiter after good reading. This will allow the software to jump to the next input field automatically.

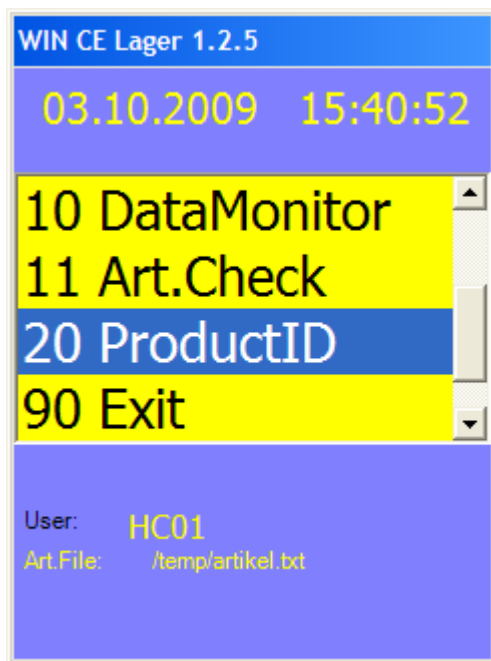
## **FTP File Transfer:**

---

Configure your handheld device as FTP server. This will allow an easy download or upload of files via IP networking, using the FTP transfer protocol. (Otherwise you have to use Microsoft Active Sync.)

## Software Description

---



### ***User Menu***

Contains an user menu with main selection for approach, dispatch, inventory and other functions.

Action: Use the UP / DOWN buttons to select your desired action and press the ENTER button to start the selected function.

Currently supported functions:

DISPATCH. For data capturing of goods which leave the stock. (German: Abgang)

APPROACH. For data capturing of goods which reach the stock. (German: Zugang)

INVENTORY. For data capturing as inventory. (German: Inventur)

ORDER. For taking an order with art no and value. (German: Bestellung)

RELOCATION. For relocation between stocks. (German: Umlagerung)

### ***Input Mask Approach, Dispatch, Inventory, Order***

Main input menu for APPROACH, DISPATCH, INVENTORY or ORDER.

Input user no, article no and value.

Note: if the system finds an article file named ARTIKEL.TXT inside /temp directory, it will display the artikel text and the current asset from the article file. In this case you can not enter data for article which are not inside the article file!

If you prefer a „free version“: delete /TEMP/ARTIKEL.TXT. In this case the software allows every article input.

Action: Finish every input with ENTER key. The software will jump to the next field automatically. Use the ESC key to go back one field or to close the form.

Configure your barcode reader to send TAB as post delimiter to get an automatic input sequence after barcode reading!

If you are inside value input and if you use an article file inside your handheld: press F1 and the handheld keyboard and the program will show you further article details from your file:

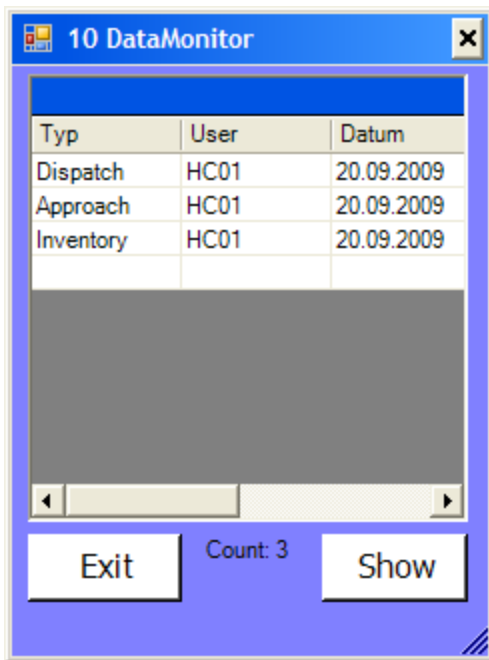


### ***Input Mask Relocation***

Relocation indicates two input masks: First specify user and relocation place (where to go) - then an artikelinput menu similar to the standard.

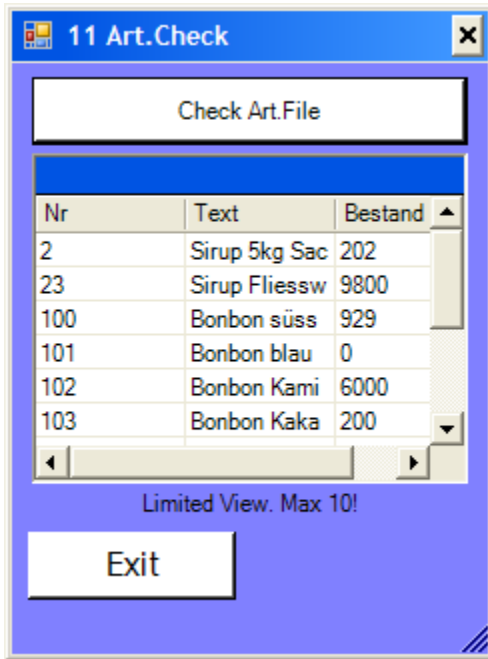
If the system detects an valid article file inside the handheld the article data and current asset will be shown in value field. The user can press ENTER to accept and relocation for this article or ESC to decline the relocation. Data will be stored with ENTER only.

If the system does not detect an article file the user can input a value after reading a article no barcode. ENTER will accept, ESC will decline.



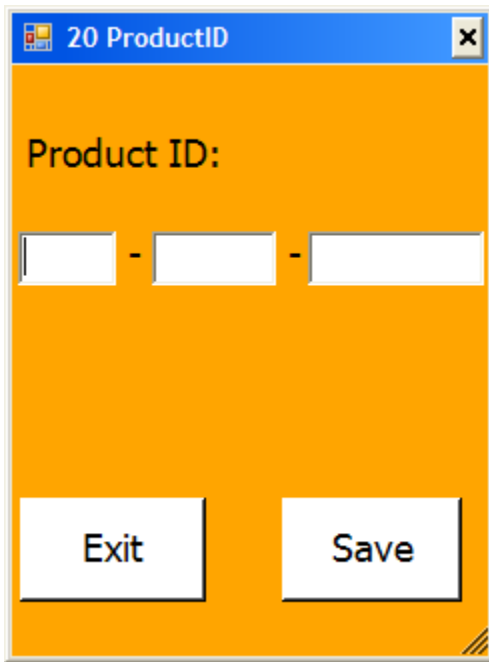
## ***Data Monitor***

The data monitor gives you information about your current data input. It shows the content of the saved /temp/buchung.xls file in easy to use table format.



## ***Article Check***

This function checks an uploaded article host file and presents the first 10 article blocks for your information. You can use it to verify if your article host file have to correct format for data processing inside the handheld device.



## ***Product ID***

Enter your product ID here. This will change the demo version into a full version without any input limits.

Note: you may use one product ID for one handheld device only! E.g. if you have 5 handheld devices using our software, you need 5x product Ids.

## Files

---

### Software WinCeLagerEN-xxxx.EXE

Software for Windows CE 5.0 handheld devices. Needs hardware with WIN CE 5.0 and display in QVGA resolution 240 x 320 pixels. XXX represents the version nummer of the software.

Note: WinCELager is the german name - the EN represents it contains the english language file!

### Article Host File /TEMP/ARTIKEL.TXT

Optionally: This file may contain your article with no, text and last asset. Data format XLS / CSV, seperated by ; (Semikolon). You can create this file at your local PC and upload it into the handheld device. If this uploaded into the /TEMP file of your handheld device the software will recognize it automatically and use it. After reading a barcode / input an article no, the software will search into the article file if the article is valid. The software will show article text and last asset value inside the display. The user may capture valid article only. (Note: if the file is not uploaded to the handheld device, the user may capture ALL articles!)

#### Field Records:

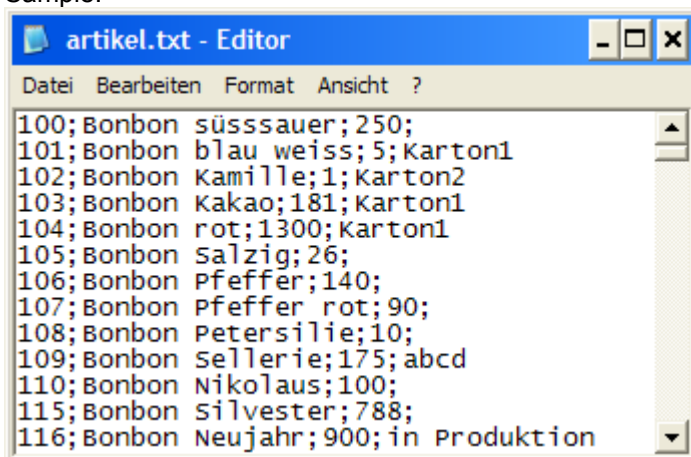
Field 01: Article No

Field 02: Article Text

Field 03: Last Asset

Field 04: Storage Location

Sample:



```
artikel.txt - Editor
Datei Bearbeiten Format Ansicht ?
100;Bonbon süssauer;250;
101;Bonbon blau weiss;5;Karton1
102;Bonbon Kamille;1;Karton2
103;Bonbon Kakao;181;Karton1
104;Bonbon rot;1300;Karton1
105;Bonbon salzig;26;
106;Bonbon Pfeffer;140;
107;Bonbon Pfeffer rot;90;
108;Bonbon Petersilie;10;
109;Bonbon Sellerie;175;abcd
110;Bonbon Nikolaus;100;
115;Bonbon silvester;788;
116;Bonbon Neujahr;900;in Produktion
```

## Input Data /TEMP/DATA.XLS

This file contains the user input data. It supports XLS / CSV format, separated by TAB. It is possible to process it with Office / Excel (or Impress / Calc) or to import the data into any software which supports the XLS / CSV data format.

### Field Records:

Field 01: Input Type

Field 02: User

Field 03: Date

Field 04: Time

Field 05: Art No

Field 06: Value

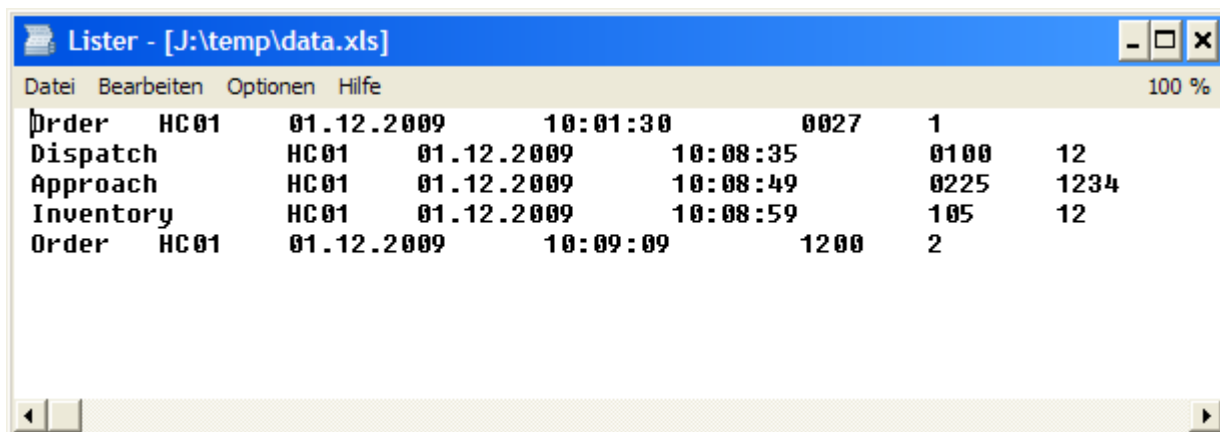
Optionally when Input Type Relocation:

Field 07: Storage Place NEW

Sample data file with Office / Excel:

	A	B	C	D	E	F	G
1	Order	HC01	01.12.2009	10:01:30	27	1	
2	Dispatch	HC01	01.12.2009	10:08:35	100	12	
3	Approach	HC01	01.12.2009	10:08:49	225	1234	
4	Inventory	HC01	01.12.2009	10:08:59	105	12	
5	Order	HC01	01.12.2009	10:09:09	1200	2	
6							
7							
8							
9							

Sample data file with simple ASCII editor:



Order	HC01	01.12.2009	10:01:30	0027	1		
Dispatch	HC01	01.12.2009	10:08:35		0100	12	
Approach	HC01	01.12.2009	10:08:49		0225	1234	
Inventory	HC01	01.12.2009	10:08:59		105	12	
Order	HC01	01.12.2009	10:09:09	1200	2		

Note: download this file to your local PC for further data processing. Do not miss to delete this file after correct downloading the input data to the PC.

## Installation at a Handheld Device

---

**Step 1: Upload the EXE programm to your handheld computer**

Save the software to a folder you want.

**Step 2 - optional: Upload article file to your handheld computer**

/TEMP/ARTICLE.TXT. Please note data format in this documentation.

**Step 3: Open Windows Explorer at your handheld and start EXE programm.**

**Step 4 - after finished data input: download the input data file to your PC**

/TEMP/BUCHUNG.XLS. Refer section → files for further information.

## Installation at a standard PC under WIN XP / WIN32

---

For test and trail you can install and use the software at your Windows PC. Note following steps:

Step 1: Create a folder at drive C: or D: for the software

Step 2: Save the exe programm into this folder.

Step 3: Create a folder /temp at the same drive you did step 1!!!

Step 4 - optional: Save a article file into the /temp folder of step 3.

Step 5: Start the software by clicking the EXE file

Step 6 - after finished data input: you will find the input data as BUCHUNG.XLS inside the /TEMP folder

Note: for running this software at your PC, you need the Microsoft DOT NET framework 2.0 or higher on your PC. Otherwise you will see an error message. You can download and install the framework vom the MS website!

Please keep in mind: running this software at your local PC is not the main aim. It is a bit tricky to use the menus with mouse and ENTER key - because the software is designed for a handheld device. But for testing - it will run at your PC too!

## More Information

---

If you have questions, if you want to buy a product ID - please contact our sales team:

AE SYSTEME [www.terminal-systems.de](http://www.terminal-systems.de)  
Am Güterbahnhof 15  
D-31303 Burgdorf / Hannover  
Germany

---