

WWS Batch

User Documentation

EN / US Version
Rev. 0.1.0












Content

Content.....	2
Software Installation.....	4
Software Start: Serial No.....	5
Main Table Window.....	6
Data Input. Dispatch. Approach. Inventory. Order.....	7
Automatic Value.....	7
Demo Mode. Value 99.....	8
Input File: BUCHUNG.XLS.....	9
Article HOST File: ARTIKEL.TXT.....	10
Using SQL.....	11
SQL Connection String. File SqlConnection.INI.....	11
SQL Table and Fields.....	12
Start SQL.....	13
Using SQL: Write Data.....	14
SQL Error.....	15
More Information.....	16

Dokument: © AE hjw Rev 3201511a-3201518

Our mission are self explaining software tools which does not requiere any expert knowledge for users. Most of the software parts are native understand, so please see this documentation as a useful add on tool which helps in some cirtical or basic questions. If you miss something, please feel free to contact us and ask for further details.

Software Installation

Name	Änderungsdatum	Typ	Größe
 README-WWS_Batch_DE.pdf	09.02.2015 19:10	PDF-XChange Vie...	79 KB
 version.txt	09.02.2015 19:09	Textdokument	1 KB
 wws_batch-US.exe	09.02.2015 19:08	Anwendung	288 KB
 wws_batch-DE.exe	09.02.2015 19:08	Anwendung	288 KB
 User-DOC.pdf	16.09.2014 16:26	PDF-XChange Vie...	17 KB
 SQLConnection.ini	07.07.2014 23:19	Konfigurationsein...	1 KB
 DevComponents.DotNetBar2.dll	30.05.2014 23:52	Anwendungserwe...	4.980 KB
 sample_wws_batch.ini	10.01.2014 12:31	Konfigurationsein...	1 KB
 auto_start.cmd	09.01.2014 18:28	Windows-Befehls...	1 KB
 buchung.xls	03.01.2014 09:49	Microsoft Excel 97...	1 KB
 artikel.txt	02.01.2014 19:57	Textdokument	14 KB

Software package is delivered as packed ZIP file.

Download the ZIP file from your website, save to your local desktop.

Unpack ALL (!) files from the zip into a folder of your choice.

Start the Exe file with the language pack of your choice, e.g.-DE.EXE for german and ...-US.EXE for english / US language.

Keep in mind: software is a DOT Net program. This requires Microsoft DOT NET framework on your computer. This should exist if you use a newer / current Microsoft operating system automatically.

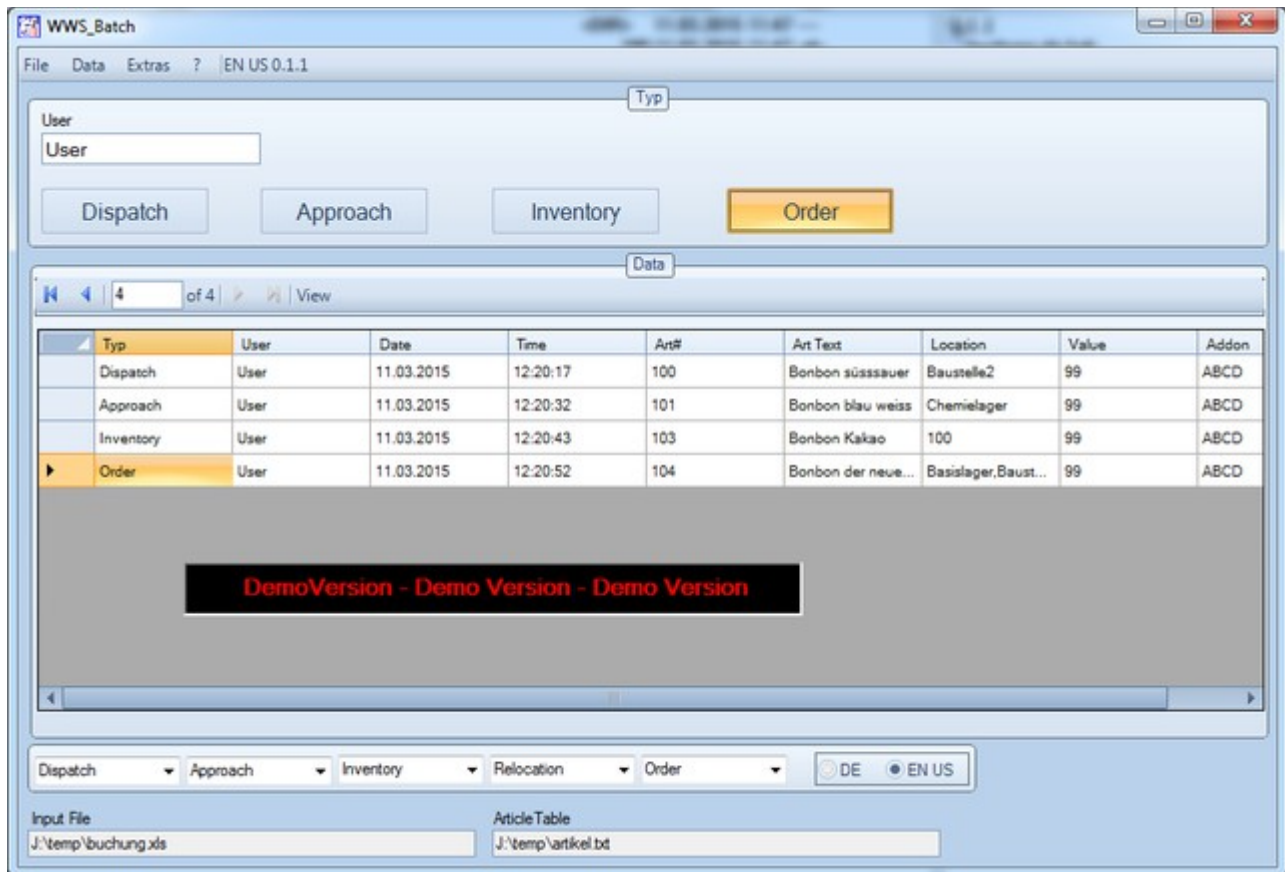
Software Start: Serial No



If you are using the free demo version, software starts with a WAITH windows for some seconds and waits until input of serial number. After you input a valid serial number, this windows will disappear for all time. Serial no will be saved together with your computer name in a DAT file inside the service folder of your computer. If you change the software to another system you have to input the serial no again!

If you are using the FREE demo version, wait until START button is enable and start the main windows of the program.

Main Table Window



Main input = table window. Table shows input from the past (empty if you just started). Choose an action between the buttons from the top.

If you are using WWS BATCH together with our WWS LITE article management software, the actions are keywords. Because of the differences in english / US or german version you can quick change the used keywords by clicking the radio button below the table.

INPUT FILE and ARTICLE TABLE shows information about used file names from this software. INPUT FILE: where the input will be saved, ARTICLE FILE an article HOST file with item information as option. For later data processing you need the file names and their locations!

Choose an action from the button above the table and press desired button!

Data Input. Dispatch. Approach. Inventory. Order

Data input window. Enter USER (values from main window), an additional input (LFS/RG) as heading information. Based on this heading, enter article no and current value you want to change for the desired action.

Art Text, location and current asset are values from article HOST file (if existing). They will automatically shown after entering an art # which exists inside the HOST file.

Enter value and press OK button. The software will save an item record and allows the next input.

Automatic Value

Use this option to save an automatic value after each input. This will allow an automatic input art # - art # - art # and the value will be daved automatically for each record. This feature is useful e.g. for barcode environments.

Demo Mode. Value 99

Demo Mode is especially for trail and test of the software. Whatever you input as asset value, software in demo mode saves value as 99 automatically. You need a valid serial no to change the demo mode into full mode. Activated demo mode is shown inside the main table window.

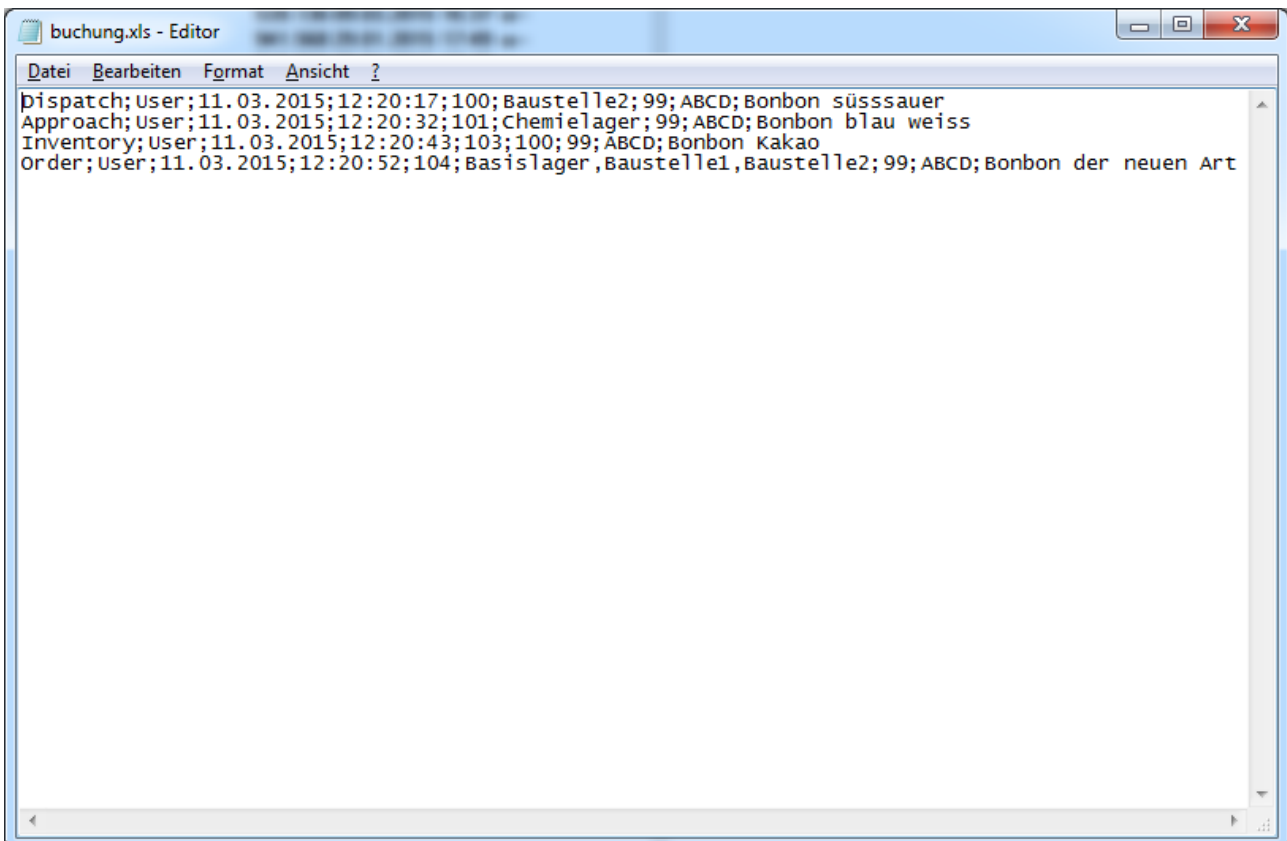
Input File: BUCHUNG.XLS

Vaild from version 0.0.3.

Data format: textfile in XLS / CSV format. Delimter is ; (semikolon). End char of every block is CR LF.

Field1:	Record Type / Action
Field2:	User
Field3:	Date
Field4:	Time
Field5:	Article No
Field6:	Location Place
Field7:	Value
Field8:	Addon Input
Field9:	Option: article text for new items. (If supported)

Sample file. Note: date / time format will be saved as given in your local computer environment. Picture shows a sample created on a computer with a german windows (day-month-year date).



```
Dispatch;User;11.03.2015;12:20:17;100;Baustelle2;99;ABCD;Bonbon süssauer
Approach;User;11.03.2015;12:20:32;101;Chemielager;99;ABCD;Bonbon blau weiss
Inventory;User;11.03.2015;12:20:43;103;100;99;ABCD;Bonbon Kakao
Order;User;11.03.2015;12:20:52;104;Basislager ,Baustelle1 ,Baustelle2;99;ABCD;Bonbon der neuen Art
```

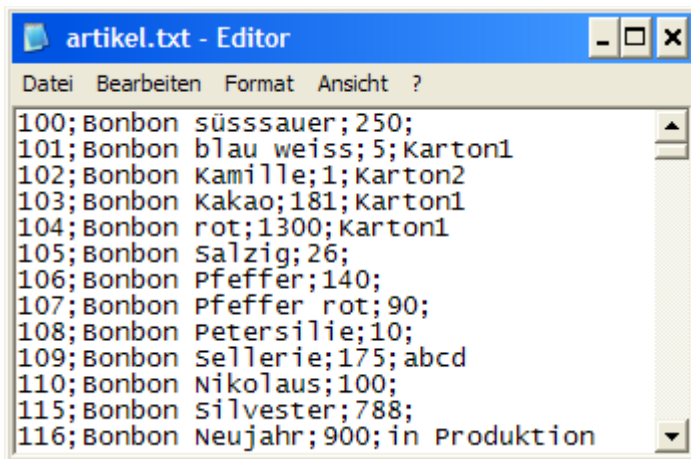
Article HOST File: ARTIKEL.TXT

Software supports an article HOST file with some additional information shown in the display during input of an article item. Note: this article HOST file is optional, if it exists, the values will be shown. If there is no file the software will work without any information from this file!

Format: text file in XLS CSV format with delimiter ; (Semikolon).

Field1: Artikel No
Field2: Artikel Text. Shown in data input window
Field3: Current value. Shown in data input window
Field4: Location place. Shown in data input window

Sample for an article HOST file:

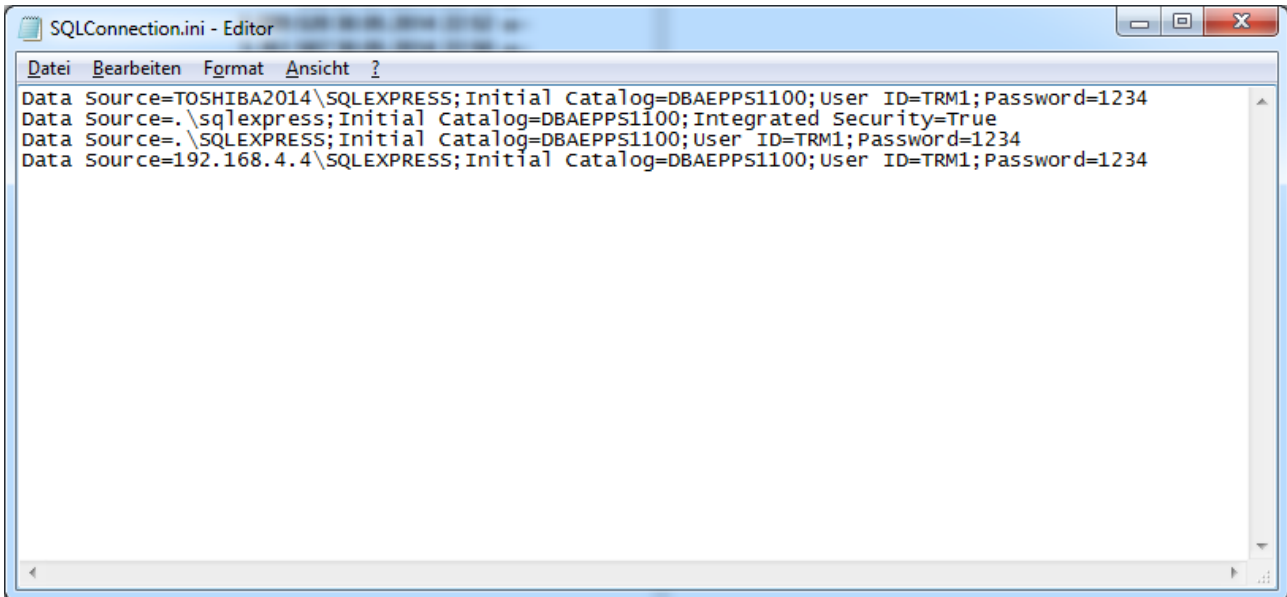


```
artikel.txt - Editor
Datei Bearbeiten Format Ansicht ?
100; Bonbon süsssaue; 250;
101; Bonbon blau weiss; 5; Karton1
102; Bonbon Kamille; 1; Karton2
103; Bonbon Kakao; 181; Karton1
104; Bonbon rot; 1300; Karton1
105; Bonbon Salz; 26;
106; Bonbon Pfeffer; 140;
107; Bonbon Pfeffer rot; 90;
108; Bonbon Petersilie; 10;
109; Bonbon Sellerie; 175; abcd
110; Bonbon Nikolaus; 100;
115; Bonbon Silvester; 788;
116; Bonbon Neujahr; 900; in Produktion
```

Using SQL

This software contains an SQL client to write records directly to an SQL database server somewhere inside the LAN network. It supports Microsoft SQL server.

SQL Connection String. File SQLConnection.INI



```
SQLConnection.ini - Editor
Datei Bearbeiten Format Ansicht ?
Data Source=TOSHIBA2014\SQLEXPRESS;Initial Catalog=DBAEPPS1100;User ID=TRM1;Password=1234
Data Source=.\sql express;Initial Catalog=DBAEPPS1100;Integrated Security=True
Data Source=.\SQLEXPRESS;Initial Catalog=DBAEPPS1100;User ID=TRM1;Password=1234
Data Source=192.168.4.4\SQLEXPRESS;Initial Catalog=DBAEPPS1100;User ID=TRM1;Password=1234
```

File containing connection string for SQL database server. Edit this file fitting to your local SQL server.

SQL Table and Fields

The screenshot shows a 'Setup' dialog box with two tabs: 'Addon' and 'SQL Settings'. The 'SQL Settings' tab is active. It contains two main sections: 'SQL Dest. Table' and 'SQL Field Names'.

SQL Dest. Table: A text box containing 'BDEData1'.

SQL Field Names: A table with two columns: 'Field Name' and 'SQL Name'.

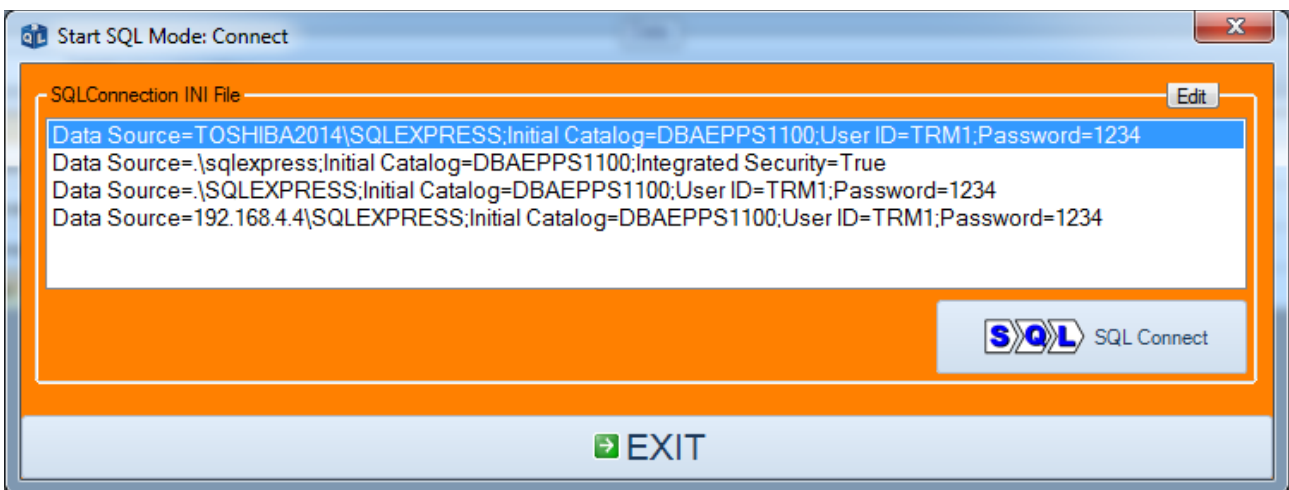
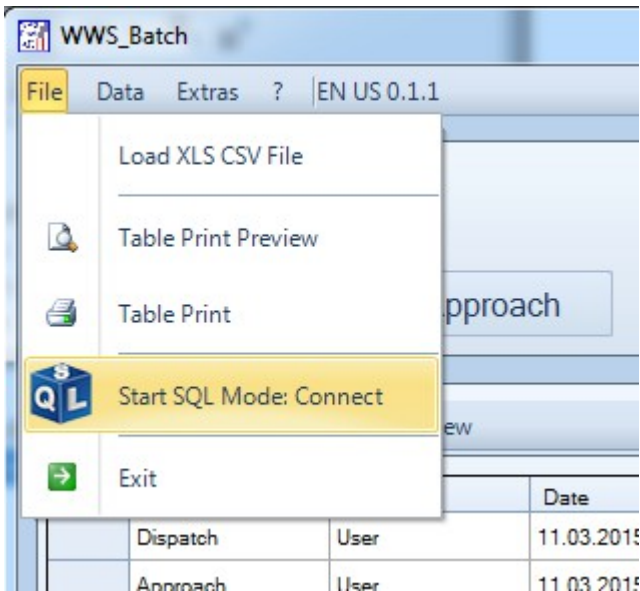
Field Name	SQL Name
Typ	xType
User	xUserId
Date	xDate
Art#	xOrderId
Art Text	
Location	xLocationId
Value	xValue
Addon	xInfo

Below the table, there is a red text box with the instruction: "Leave empty if field not needed in SQL database!".

At the bottom of the dialog, there is a note: "Please restart software after changing values." and a button labeled "OK/Exit" with a green arrow icon.

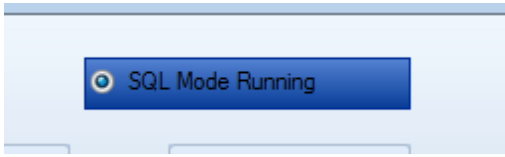
Use Extras, Settings, Tab SQL for definitions SQL table and fieldnames.

Start SQL



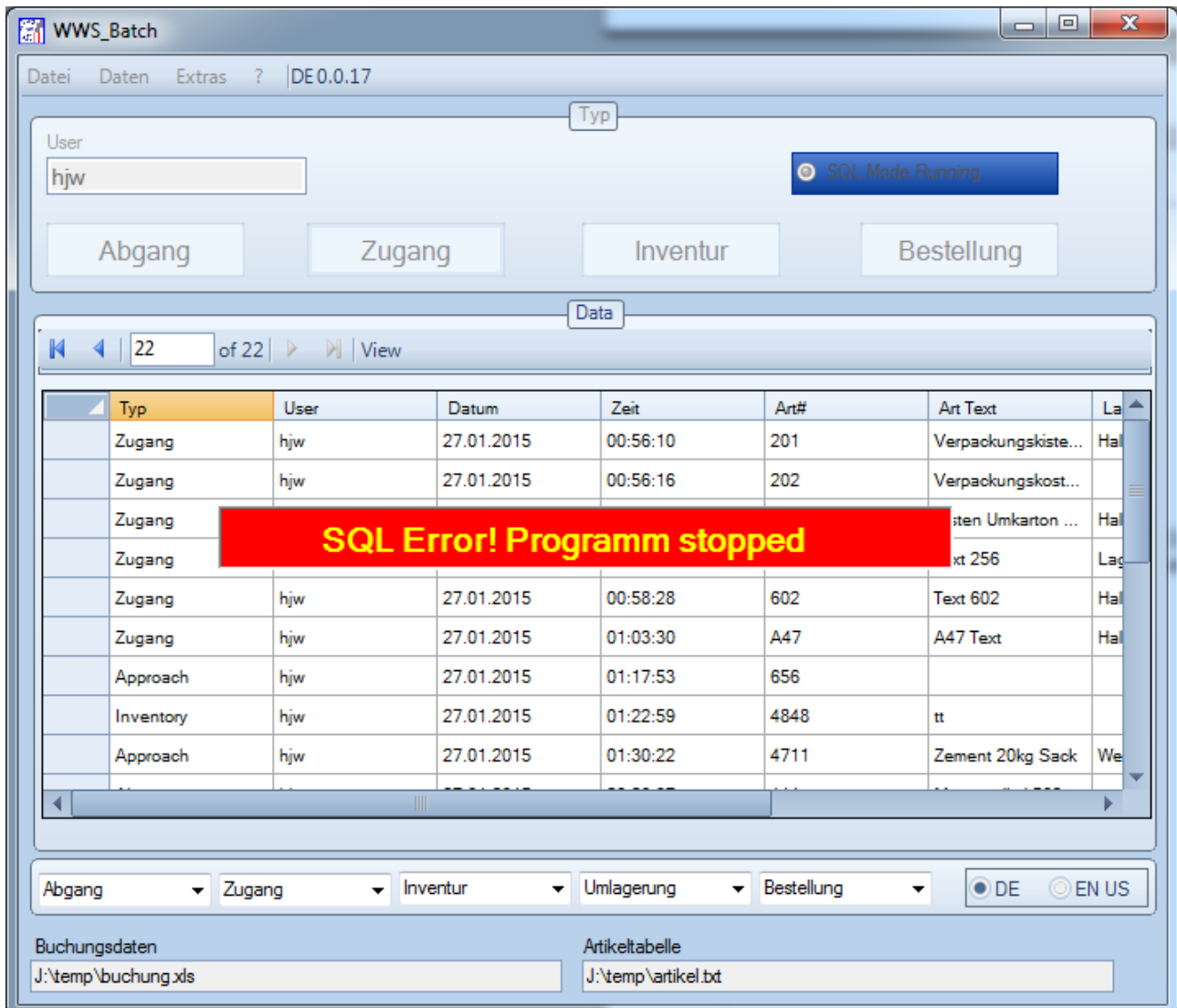
Start SQL mode by clicking File, Start SQL Mode:Connect. A listbox with possible SQL (form sql connection file) will appear. Choose your SQL server and click for connect.

Using SQL: Write Data



When SQL mode ist started, a small icon will apeare in the bottom of the software. This shows you: every recored will be automatically transfered to SQL server after input! Nothing more to do!

SQL Error



If there is an SQL error during writing data, a big red error message will appear and the software will stop. It is time to check your SQL server and the connection!

More Information

Screenshots show samples. Information without warranty. If you have questions, if you want to buy a product ID - please contact our sales team:

AE SYSTEME www.terminal-systems.de
Am Güterbahnhof 15
D-31303 Burgdorf / Hannover
Germany
Mail: info@terminal-systems.de