



WIN CE MOBILE Data – Data Capturing Software Package for Mobile Data Terminals



This software package is for your mobile data terminal MDT. It combines most used applications for mobile data capturing inventory stock management, warehouse control and more.

Contains functions for dispatch, approach, inventory, relocation and order / packing. Also a free software tool for direct value changing. Software package easy to use, free configurable and supports standard XLS / CSV data formats for a wide field of data processing.

Useable for most MDT systems with Windows CE / Windows Mobile (C) operating system!

Bilder zeigen Beispiele. Änderungen vorbehalten.

AE-SYSTEME
Am Güterbahnhof 15
D-31303 Burgdorf

Tel.: +49-(0)5136/80 24 21
Fax: +49-(0)5136/977 63 68

info@terminal-systems.de
www.terminal-systems.de



Functionalities for the most used jobs in stock business...



Inventory Software Package for mobile data terminals

- Designed for using at MDT systems with Windows / Windows Mobile (c) (from CE 5.0) and QVGA display (240x320)
- Supports barcode input via laser scanner / RFID proximity input
- Integrated INVENTORY, APPROCH, DISPATCH, ORDER / PACKING, RELOCATION and more in one software package
- Supports WiFi / wireless LAN for wireless network communication / data communication with FTP protocol
- Allows Upload of an article HOST file with text, location, price and asset information.
- Open CSV / XLS data formats - for processing the data with Office, Excel or your own software package, additional data processing with our PC based stock management software AE WWS Lite with module EXTERNAL DATA
- German or English language version available - other native languages available on request via software service

Note: To learn more about the advantages directly in your environment, you can download a FREE trial and demo version of this software directly from our webpage

<http://www.terminal-systems.de/english/wince-mobiledata1-en.htm>

Bilder zeigen Beispiele. Änderungen vorbehalten.



Easy to use USER INTERFACE and standard data formats...

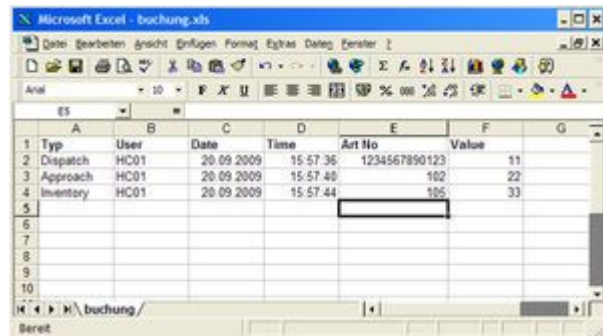


Easy to use User Interface (UI)

Simple user interface for QVGA displays
Designed for using with mobile data terminals
Using with ENTER and ESC key
Wide area configurable

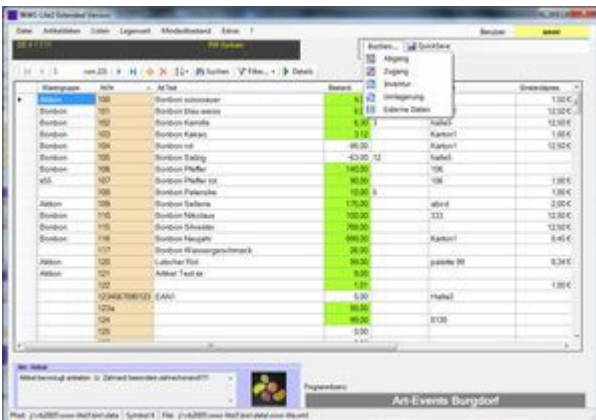
Data in ... Office / Excel / Calc

Uses data format CSV / XLS
Simple communication with FTP
Imports your data in Office Excel / Openoffice Calc or other software packages which supports CSV / XLS format



Data in ... stock / inventory management WWS-LITE-WIN

Optionally: data import into our stock and inventory management software WWS-LITE-WIN
For dispatch / approach and extensive data history
Integrated FTP file transfer between WWS-LITE-WIN and handheld computer



Bilder zeigen Beispiele. Änderungen vorbehalten.



Designed for modern MDT hardware with Windows CE / Mobile...

Sample Hardware, software e.g. for

DATALOGIC MEMOR

Mobile data terminal for mobile data capturing in field or warehousing

Extremely small in mobile phone format

Operating system Windows CE / Windows Mobile (c)

Small Graphic display, QVGA 240x320, Color

Perfect TFT color, active and with backlight

New LOW power technology

New model - with XSCALE CPU, >600Mhz

backlighted keyboard and touch screen / display

IP54 dust and water protected

... and much more



Pictures show samples. Technical information can change without any notification. © AE / HJW Rev 320159a.3201510a

Bilder zeigen Beispiele. Änderungen vorbehalten.

AE-SYSTEME
Am Güterbahnhof 15
D-31303 Burgdorf

Tel.: +49-(0)5136/80 24 21
Fax: +49-(0)5136/977 63 68

info@terminal-systems.de
www.terminal-systems.de